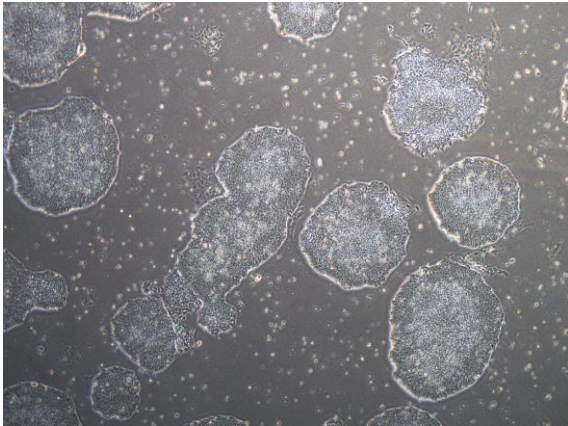
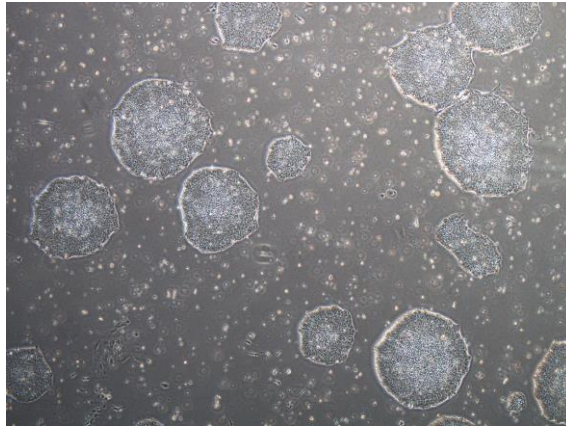


【 CiRA-j-1056 】 Morphology of iPSC colonies

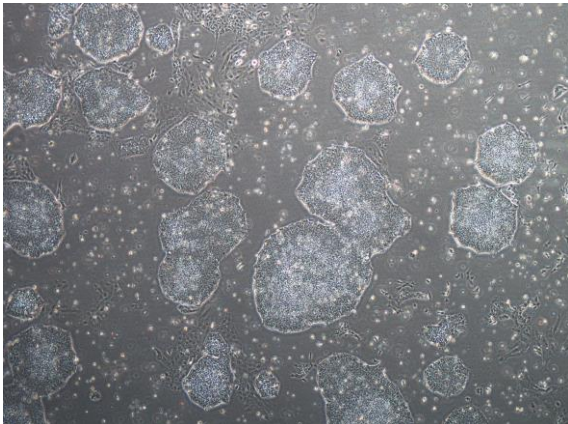
CiRA-j-1056-A: passage-2



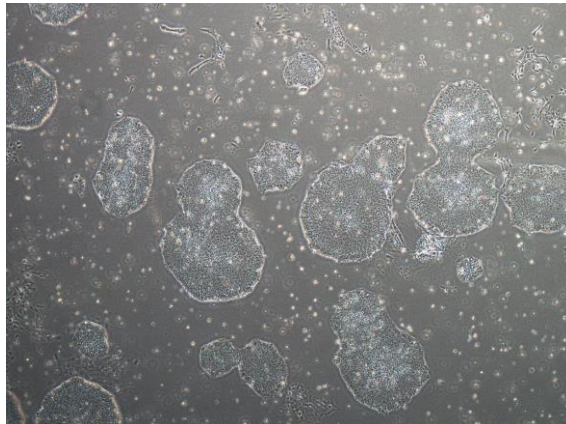
CiRA-j-1056-B: passage-2



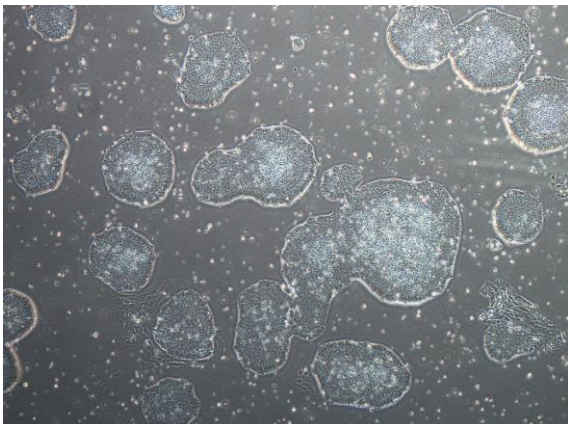
CiRA-j-1056-C: passage-2



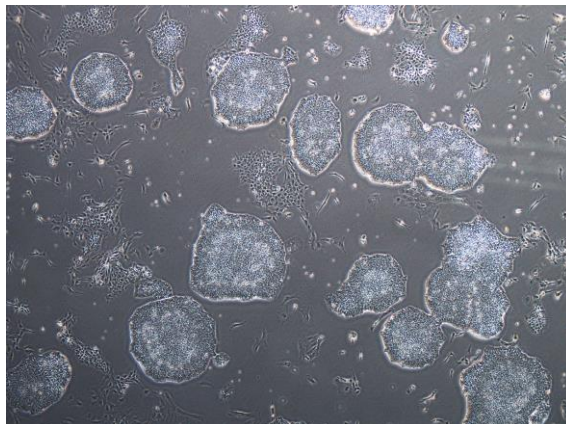
CiRA-j-1056-D: passage-2



CiRA-j-1056-E: passage-2



CiRA-j-1056-F: passage-2



(All images were captured at 4x magnification)